

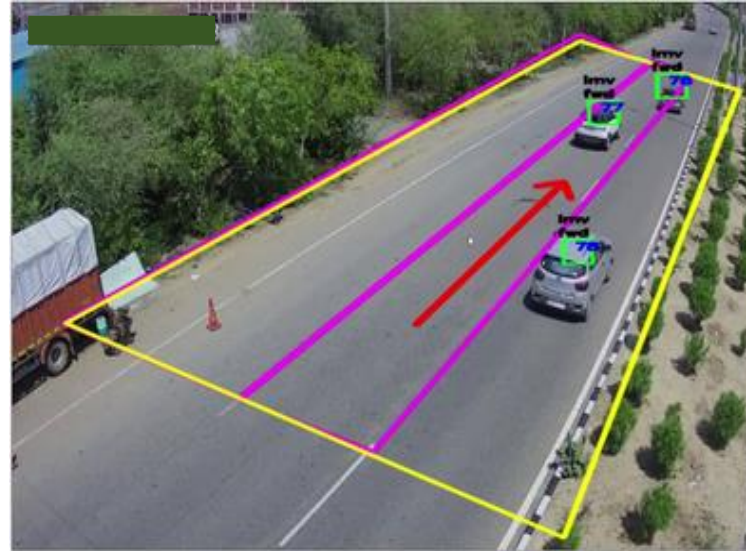
SynTCC

VIDEO BASED ATCC SYSTEM

Synergy Labs Automatic Traffic Counter and Classifier (ATCC) is a high-speed traffic data collection system. It detects, counts and classifies all traffic passing where it is installed without interruption to traffic flows.

With improved data collection equipment, continuous data can also be used as input for traffic management systems and other operational purposes.

It helps the authority to make decisions and hence lots of highway accidents can be avoided. With the advancement of new technologies, traffic data can be collected for the development of existing and new infrastructure.



Overview

- **For vehicle count**, identification, classification, traffic volume, & average traffic speed
- **For traffic planning**, congestion, avoidance, toll leaking
- **Helps in proactive** for counting, >95% accuracy under ideal conditions for classification over 6 classes
- **Robust to day/night** rain and diverse weather conditions
- **Low False** Classification Rate
- **Bi-Directional** traffic detection

System Features

- **View/Zoom/Print** violated images and extract detailed report of violations
- **Customized** Dashboard
- **Works** with real time video and recorded video
- **Cost** effective and low maintenance
- **Agnostic** to 3rd party Video Management System
- **Cost effective** and low maintenance
- **Works** with any IP Camera
- **Interoperable** among various systems
- **Exportable** and viewable reports
- **API/SDK** Available
- **OS Linux**

Process Flow

- **Vehicle Detection and Video Capture:** The system automatically detects a vehicle in the camera view using video detection
- **Automatically captures** real time traffic data including vehicle count & classification, traffic volume and average speed.
- **Predicts Traffic Jams** and other impediments using machine learning and artificial intelligence algorithms.
- **Incident types:** Stopped vehicle, average speed of vehicle, direction of vehicle movement.

Application Area

- Traffic Signal Design
- Traffic Survey
- Parking System
- Toll Enforcement/ Free Flow Tolling
- Infrastructure Planning



SynergyLabs Technology Pvt. Ltd.

+91-99102 45209 | 0124 4006215 | www.synlabs.io | info@synlabs.io
903, 9th Floor, Vipul Square, Sec. 43, Gurgaon, Haryana- 122002

Description	Specification
CAMERA SPECIFICATION	
FRAME RATE	30 FPS
Resolution	2MP
Format	1920 * 1080
Interface	IP
WDR	120 db
HLC	Supported
BLC	Supported
VIDEO Compression	H.265 & H.265+, MJPEG
LENS SPECIFICATION	
Sensor	1/2.8, 2.0 megapixel, progressive scan, CMOS
Lens	4.7 ~ 47mm
FOCUS	Automatic focusing and motorized zoom lens
Protocol	TCP/RTSP
Compatible Integration	ONVIF (Profile S, Profile G, Profile T), API
IR Range	Smart-IR, up to 100m (328ft) IR range
Day/ Night Functionality	IR-cut filter with auto switch (ICR)
Power	DC 12V±25%, AC 24V±25% ,PoE (IEEE 802.3at) Power consumption: 13.7W
Ingress Protection	IP67

